

Contact sheet

It is also available for custom fabrication of a prism of which size is different in the catalog. Simply fill in the inquiry sheet specifications, and please send us a fax or by e-mail. We will contact you by return and confirm the specification.

Contact sheet for Special Order for Prism

☐ Estimation ☐ Order

Date

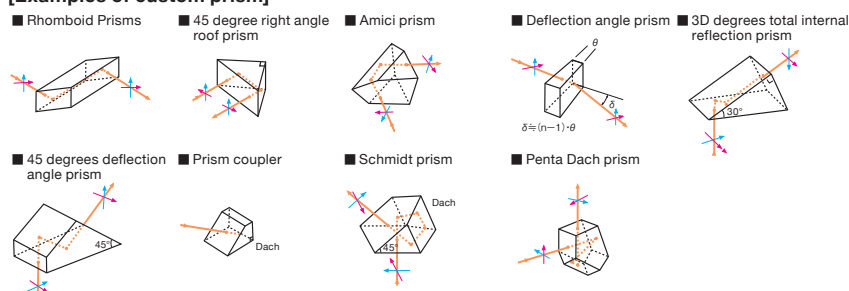
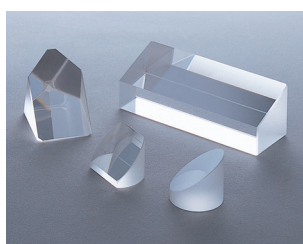
☐ To: Sigma Koki Co., Ltd. **FAX +81-3-5638-6550**

Affiliation (Organization Name)					
Department			Name		
TEL		FAX		E-mail	
Country/Address					
Name & Designation	(Tentative name is okay)				
Drawing Number			Estimate	<input type="checkbox"/> Yes: by Date <input type="checkbox"/> No	
Desired Delivery Date			Budget	JP Yen	
Specifications of Prism	Quantity				
	Selected from standard product	Products Number	If you are using a prism of standard product, please fill in the product number.		
	Custom made	Name of the prism			
		Material	<input type="checkbox"/> BK7 <input type="checkbox"/> Synthetic fused silica <input type="checkbox"/> Other ()		
		Surface flatness of substrate		Angle accuracy	<input type="checkbox"/> Standard ($\pm 3'$) <input type="checkbox"/> Other ()
Specifications of Coating	Presence or absence of coating	<input type="checkbox"/> No coating <input type="checkbox"/> Single-layer AR coating <input type="checkbox"/> Multi-layer AR coating <input type="checkbox"/> Al only			
		<input type="checkbox"/> Al+MgF ₂ <input type="checkbox"/> Dielectric coating <input type="checkbox"/> Other ()			
Specifications of Light Source Used	Wavelength Range	$\lambda =$	nm	Type	
	Output or Energy	W		Beam size	mm
		J	Pulse width	s	Repetition frequency
	Incident angle	$\theta =$	°		
Shape, other	* Write more detailed specifications here. (Rough illustration is acceptable.)				

Sigma Koki Co., Ltd.

In addition to the catalog product, it can also be produced the special specifications such as the following.

[Examples of custom prism]



Application Systems

Optics & Optical Coatings

Holders

Bases

Manual Stages

Actuators

Motorized Stages

Light Sources

Index

Guide

Mirrors

Beamsplitters

Polarizers

Lenses

Multi-Element Optics

Filters

Prisms

Substrates/Windows

Optical Data

Maintenance

Selection Guide

45 Degrees Angle

Retro-reflectors

Equilateral Dispersing Prisms

Others